



TERT (Phospho-Ser227) Antibody

#58047

Number: 58047

Amount: 100µg/100µl

Form of Antibody: Rabbit IgG in phosphate buffered saline (without Mg²⁺ and Ca²⁺), pH 7.4, 150mM NaCl, 0.02% sodium azide and 50% glycerol.

Storage/Stability: Store at -20°C/1 year

Immunogen: synthetic phosphopeptide corresponding to residues surrounding Ser227 of human TERT

Purification: The antibody was affinity-purified from rabbit antiserum by affinity-chromatography using epitope-specific phosphopeptide. The antibody against non-phosphopeptide was removed by chromatography using non-phosphopeptide corresponding to the phosphorylation site.

Specificity/Sensitivity: TERT (Phospho-Ser227) antibody detects endogenous levels of TERT only when phosphorylated at Serine227.

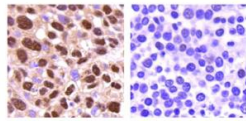
Reactivity: Human

Applications:

Predicted MW: 130KD

WB, 1:1000; IHC, 1:200; IF, 1:200

TERT pS227 antibody	+	+
TERT pS227 peptide	-	+



TERT pS227 antibody specificity was validated using IHC analyses with specific TERT pS227-blocking peptides.

Background : TERT S227 is primarily phosphorylated in cancer cells by Akt, which is critical for TERT nuclear translocation. TERT S227 can be dephosphorylated by Fructose-1,6-bisphosphatase 1 (FBP1). (PMID:38538923)