



Stat3 (Acetyl-Lys87) Antibody

#15046

Catalog Number: 15046-1, 15046-2

Amount: 50µg/50µl, 100µg/100µl

Swiss-Prot No. : P40763

Form of Antibody: Rabbit IgG in phosphate buffered saline (without Mg²⁺ and Ca²⁺), pH 7.4, 150mM NaCl, 0.02% sodium azide and 50% glycerol.

Storage/Stability: Store at -20°C/1 year

Immunogen: The antiserum was produced against synthesized peptide derived from Human Stat3 around the acetylation site of Lysine87.

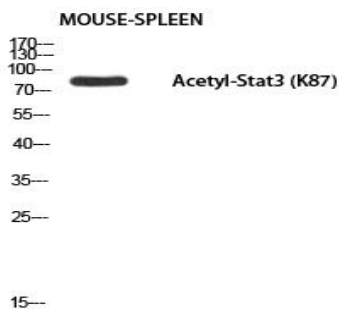
Purification: The antibody was affinity-purified from rabbit antiserum by affinity-chromatography using epitope-specific immunogen.

Specificity/Sensitivity: Stat3 (Acetyl-Lys87) Antibody detects endogenous levels of Stat3 protein only when acetylated at Lys87.

Reactivity: Human, Mouse, Rat

Applications:

Predicted MW: 85kd WB: 1:500~1:2000



Western blot analysis of MOUSE-SPLEEN using

Acetyl-Stat3 (K87) antibody.

Background :

Transcription factor that binds to the interleukin-6 (IL-6)-responsive elements identified in the promoters of various acute-phase protein genes. Activated by IL31 through IL31RA