



## CRHBP Antibody

#25517

**Catalog Number:** 25517-1, 25517-2

**Amount:** 50µg/50µl, 100µg/100µl

**Swiss-Prot No. :** P24387

**Form of Antibody:** Rabbit IgG in phosphate buffered saline (without Mg<sup>2+</sup> and Ca<sup>2+</sup>), pH 7.4, 150mM NaCl, 0.02% sodium azide and 50% glycerol.

**Storage/Stability:** Store at -20°C/1 year

**Immunogen:** .Synthesized peptide derived from the Internal region of human CRHBP.

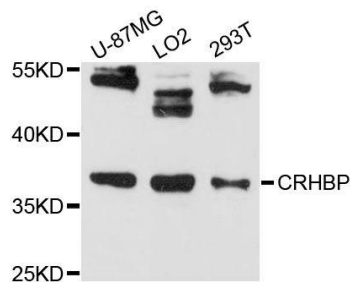
**Purification:** The antibody was affinity-purified from rabbit antiserum by affinity-chromatography using epitope-specific immunogen.

**Specificity/Sensitivity:** CRHBP Antibody detects endogenous levels of total CRHBP

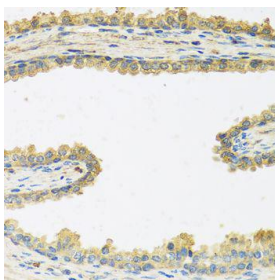
**Reactivity:** Human ,Mouse ,Rat

**Applications:**

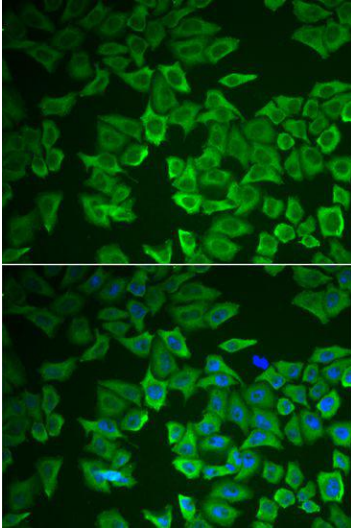
Predicted MW:36kd    WB:1:500-2000    IHC/IF:1:50-100



Western blot analysis of extracts of various cell lines, using CRHBP antibody



Immunohistochemistry of paraffin-embedded human prostate using CRHBP antibody



Immunofluorescence analysis of HeLa cells using CRHBP antibody

**Background :**

Corticotropin-releasing hormone is a potent stimulator of synthesis and secretion of preopiomelanocortin-derived peptides. Although CRH concentrations in the human peripheral circulation are normally low, they increase throughout pregnancy and fall rapidly after parturition. Maternal plasma CRH probably originates from the placenta. Human plasma contains a CRH-binding protein which inactivates CRH and which may prevent inappropriate pituitary-adrenal stimulation in pregnancy.