



MDM2 (Phospho-Ser166) Antibody

#14207

Catalog Number: 14207-1, 14207-2

Amount: 50µg/50µl, 100µg/100µl

Swiss-Prot No. :Q00987

Form of Antibody: Rabbit IgG in phosphate buffered saline (without Mg²⁺ and Ca²⁺), pH 7.4, 150mM NaCl, 0.02% sodium azide and 50% glycerol.

Storage/Stability: Store at -20°C/1 year

Immunogen: The antiserum was produced against synthesized phosphopeptide derived from Human MDM2 around the phosphorylation site of Serine166

Purification: The antibody was affinity-purified from rabbit antiserum by affinity-chromatography using epitope-specific immunogen.

Specificity/Sensitivity: MDM2(Phospho-Ser166)Antibody detects endogenous levels of MDM2 only when phosphorylated at Serine166

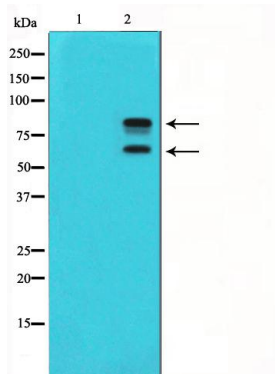
Reactivity: Human, Mouse, Rat

Applications:

Predicted MW: 55,90kd

WB: 1:500~1:2000

IHC: 1:50-200



Western blot analysis of MDM2 phosphorylation expression in COS7 whole cell lysates. The lane on the left is treated with the antigen-specific peptide

Background :

This gene is a target gene of the transcription factor tumor protein p53. The encoded protein is a nuclear phosphoprotein that binds and inhibits transactivation by tumor protein p53, as part of an autoregulatory negative feedback loop.