



β -Catenin (Phospho-Ser37) Antibody

#14196

Catalog Number: 14196-1, 14196-2

Amount: 50 μ g/50 μ l, 100 μ g/100 μ l

Swiss-Prot No. : P35222

Form of Antibody: Rabbit IgG in phosphate buffered saline (without Mg²⁺ and Ca²⁺), pH 7.4, 150mM NaCl, 0.02% sodium azide and 50% glycerol.

Storage/Stability: Store at -20°C/1 year

Immunogen: The antiserum was produced against synthesized phosphopeptide derived from Human β -Catenin around the phosphorylation site of Serine37

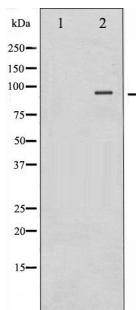
Purification: The antibody was affinity-purified from rabbit antiserum by affinity-chromatography using epitope-specific immunogen.

Specificity/Sensitivity: β -Catenin(Phospho-Ser37)Antibody detects endogenous levels of β -Catenin only when phosphorylated at Serine37

Reactivity: Human, Mouse, Rat

Applications:

Predicted MW: 92kd WB:1:500~1:2000 IHC:1:50-200



Western blot analysis of Catenin- β phosphorylation expression in 293 whole cell lysates, The lane on the left is treated with the antigen-specific peptide.

Background :

Beta-catenin is an adherens junction protein. Adherens junctions (AJs; also called the zonula adherens) are critical for the establishment and maintenance of epithelial layers, such as those lining organ surfaces. AJs mediate adhesion between cells, communicate a signal that neighboring cells are present, and anchor the actin cytoskeleton. In serving these roles, AJs regulate normal cell growth and behavior.