



## CDC25B (Phospho-Ser323) Antibody

#14194

**Catalog Number:** 14194-1, 14194-2

**Amount:** 50µg/50µl, 100µg/100µl

**Swiss-Prot No. :** P30305

**Form of Antibody:** Rabbit IgG in phosphate buffered saline (without Mg<sup>2+</sup> and Ca<sup>2+</sup>), pH 7.4, 150mM NaCl, 0.02% sodium azide and 50% glycerol.

**Storage/Stability:** Store at -20°C/1 year

**Immunogen:** The antiserum was produced against synthesized phosphopeptide derived from Human CDC25B around the phosphorylation site of Serine323

**Purification:** The antibody was affinity-purified from rabbit antiserum by affinity-chromatography using epitope-specific immunogen.

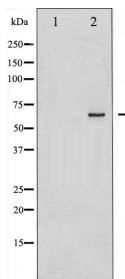
**Specificity/Sensitivity:** Phospho-CDC25B (Ser323) Antibody detects endogenous levels of CDC25B only when phosphorylated at Serine323

**Reactivity:** Human, Mouse, Rat

### Applications:

Predicted MW: 62kd

WB: 1:500~1:2000



Western blot analysis of CDC25B phosphorylation expression in PMA treated NIH-3T3 whole cell lysates. The lane on the left is treated with the antigen-specific peptide.

### Background :

CDC25B is a member of the CDC25 family of phosphatases. CDC25B activates the cyclin dependent kinase CDC2 by removing two phosphate groups and it is required for entry into mitosis. CDC25B shuttles between the nucleus and the cytoplasm due to nuclear localization and nuclear export signals.