



## $\beta$ -Actin Antibody

#26001

**Catalog Number:** 26001

**Amount:** 100 $\mu$ g/100 $\mu$ l

**Form of Antibody:** Rabbit IgG in phosphate buffered saline (without Mg<sup>2+</sup> and Ca<sup>2+</sup>), pH 7.4, 150mM NaCl, 0.02% sodium azide and 50% glycerol.

**Storage/Stability:** Store at -20°C/1 year

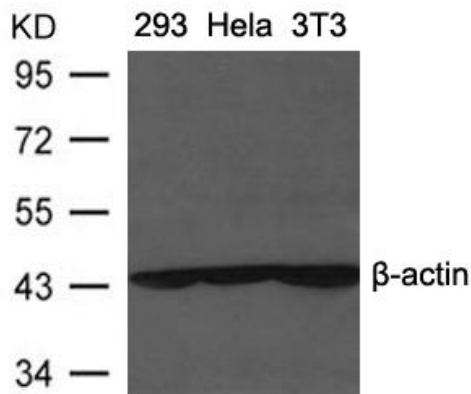
**Immunogen:** Peptide sequence around aa.6-10(A-A-L-V-V) derived from Human beta-actin.

**Purification:** The antibody was affinity-purified from rabbit antiserum by affinity-chromatography using epitope-specific immunogen.

**Reactivity:** Human, Mouse, Rat

**Applications:**

Predicted MW: 43kd      WB: 1:5000-10000



**Background** : Actins are highly conserved proteins that are involved in various types of cell motility and are ubiquitously expressed in all eukaryotic cells.