



## B-RAF (Phospho-Ser446) Antibody

#14187

**Catalog Number:** 14187-1, 14187-2

**Amount:** 50µg/50µl, 100µg/100µl

**Swiss-Prot No. :** P15056

**Form of Antibody:** Rabbit IgG in phosphate buffered saline (without Mg<sup>2+</sup> and Ca<sup>2+</sup>), pH 7.4, 150mM NaCl, 0.02% sodium azide and 50% glycerol.

**Storage/Stability:** Store at -20°C/1 year

**Immunogen:** The antiserum was produced against synthesized phosphopeptide derived from Human B-RAF around the phosphorylation site of Serine 446

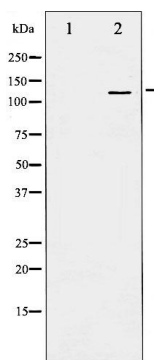
**Purification:** The antibody was affinity-purified from rabbit antiserum by affinity-chromatography using epitope-specific immunogen.

**Specificity/Sensitivity:** Phospho-B-RAF (Ser 446) Antibody detects endogenous levels of B-RAF only when phosphorylated at Serine 446

**Reactivity:** Human, Mouse, Rat

### Applications:

Predicted MW: 110kd      WB:1:500~1:2000      IHC:1:50-200



Western blot analysis of B-RAF phosphorylation expression in EGF treated 293 whole cell lysates, The lane on the left is treated with the antigen-specific peptide.

### Background :

B-Raf is a tyrosine kinase-like kinase of the RAF family. Involved in the transduction of mitogenic signals from the cell membrane to the nucleus. May play a role in the postsynaptic responses of hippocampal neuron.