



KIT (Phospho-Tyr721) Antibody

#14185

Catalog Number: 14185-1, 14185-2

Amount: 50µg/50µl, 100µg/100µl

Swiss-Prot No. : P10721

Form of Antibody: Rabbit IgG in phosphate buffered saline (without Mg²⁺ and Ca²⁺), pH 7.4, 150mM NaCl, 0.02% sodium azide and 50% glycerol.

Storage/Stability: Store at -20°C/1 year

Immunogen: The antiserum was produced against synthesized phosphopeptide derived from Human KIT around the phosphorylation site of Tyrosine 721

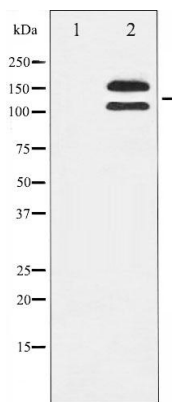
Purification: The antibody was affinity-purified from rabbit antiserum by affinity-chromatography using epitope-specific immunogen.

Specificity/Sensitivity: Phospho-KIT (Tyr721) Antibody detects endogenous levels of KIT only when phosphorylated at Tyrosine 721

Reactivity: Human, Mouse, Rat

Applications:

Predicted MW: 120,145kd WB: 1:500~1:2000



Western blot analysis of c-Kit phosphorylation expression in HeLa whole cell lysates, The lane on the left is treated with the antigen-specific peptide.

Background :

KIT encodes the human homolog of the proto-oncogene c-kit. C-kit was first identified as the cellular homolog of the feline sarcoma viral oncogene v-kit. KIT is a type 3 transmembrane receptor for MGF (mast cell growth factor, also known as stem cell factor). Mutations in KIT are associated with gastrointestinal stromal tumors, mast cell disease, acute myelogenous leukemia, and piebaldism.