



p56 Dok-2 Antibody

#24341

Catalog Number: 24341-1, 24341-2

Amount: 50µg/50µl, 100µg/100µl

Swiss-Prot No. : O60496

Form of Antibody: Rabbit IgG in phosphate buffered saline (without Mg²⁺ and Ca²⁺), pH 7.4, 150mM NaCl, 0.02% sodium azide and 50% glycerol.

Storage/Stability: Store at -20°C/1 year

Immunogen: The antiserum was produced against synthesized peptide derived from Human p56 Dok-2

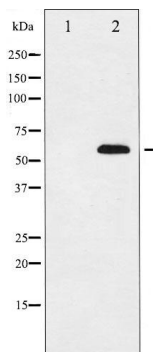
Purification: The antibody was affinity-purified from rabbit antiserum by affinity-chromatography using epitope-specific immunogen.

Specificity/Sensitivity: p56 Dok-2 Antibody detects endogenous levels of total p56 Dok-2

Reactivity: Human, Mouse

Applications:

Predicted MW: 56kd WB: 1:500-2000 IHC: 1:50-200



Western blot analysis of p56 Dok-2 expression in K562 whole cell lysates, The lane on the left is treated with the antigen-specific peptide.

Background :

The protein encoded by this gene is constitutively tyrosine phosphorylated in hematopoietic progenitors isolated from chronic myelogenous leukemia (CML) patients in the chronic phase. It may be a critical substrate for p210(bcr/abl), a chimeric protein whose presence is associated with CML.