



## SP1 (Phospho-Thr739) Antibody

#14179

**Catalog Number:** 14179-1, 14179-2

**Amount:** 50µg/50µl, 100µg/100µl

**Swiss-Prot No. :** P08047

**Form of Antibody:** Rabbit IgG in phosphate buffered saline (without Mg<sup>2+</sup> and Ca<sup>2+</sup>), pH 7.4, 150mM NaCl, 0.02% sodium azide and 50% glycerol.

**Storage/Stability:** Store at -20°C/1 year

**Immunogen:** The antiserum was produced against synthesized phosphopeptide derived from Human SP1 around the phosphorylation site of Threonine 739

**Purification:** The antibody was affinity-purified from rabbit antiserum by affinity-chromatography using epitope-specific immunogen.

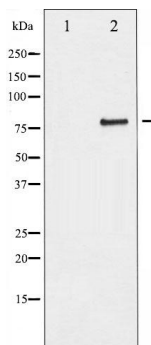
**Specificity/Sensitivity:** Phospho-SP1 (Thr 739) Antibody detects endogenous levels of SP1 only when phosphorylated at Threonine 739

**Reactivity:** Human, Mouse, Rat

### Applications:

Predicted MW: 81kd

WB: 1:500~1:2000



Western blot analysis of SP1

phosphorylation expression in serum

treated COS7 whole cell lysates, The

lane on the left is treated with the

antigen-specific peptide.

### Background :

SP1 is a transcription factor of the Sp1 C2H2-type zinc-finger protein family. Phosphorylated and activated by MAPK. Dephosphorylation by PTEN inhibits DNA binding. Binds to p38 in the nucleus.