



#24339

Catalog Number: 24339-1, 24339-2

Amount: 50µg/50µl, 100µg/100µl

Swiss-Prot No. : P11309

Form of Antibody: Rabbit IgG in phosphate buffered saline (without Mg²⁺ and Ca²⁺), pH 7.4, 150mM NaCl, 0.02% sodium azide and 50% glycerol.

Storage/Stability: Store at -20°C/1 year

Immunogen: The antiserum was produced against synthesized peptide derived from Human Pim1

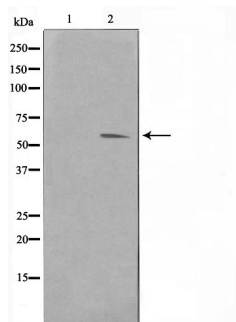
Purification: The antibody was affinity-purified from rabbit antiserum by affinity-chromatography using epitope-specific immunogen.

Specificity/Sensitivity: Pim1 Antibody detects endogenous levels of total Pim1

Reactivity: Human, Mouse, Rat

Applications:

Predicted MW: 50kd WB: 1:500-2000



Western blot analysis on HuvEc cell lysate using Pim-1 Antibody

Background :

Pim1 a proto-oncogene serine/threonine kinase involved in cell survival and cell proliferation and thus providing a selective advantage in tumorigenesis. Exerts its oncogenic activity through: the regulation of MYC transcriptional activity, the regulation of cell cycle progression and by phosphorylation and inhibition of proapoptotic proteins (BAD, MAP3K5, FOXO3). Phosphorylation of MYC leads to an increase of MYC protein stability and thereby an increase of transcriptional activity. The stabilization of MYC exercised by PIM1 might explain partly the strong synergism between these two oncogenes in tumorigenesis.