



C-RAF (Phospho-Ser301) Antibody

#14137

Catalog Number: 14137-1, 14137-2

Amount: 50µg/50µl, 100µg/100µl

Swiss-Prot No. : P04049

Form of Antibody: Rabbit IgG in phosphate buffered saline (without Mg²⁺ and Ca²⁺), pH 7.4, 150mM NaCl, 0.02% sodium azide and 50% glycerol.

Storage/Stability: Store at -20°C/1 year

Immunogen: The antiserum was produced against synthesized phosphopeptide derived from Human C-RAF around the phosphorylation site of Sersine 301

Purification: The antibody was affinity-purified from rabbit antiserum by affinity-chromatography using epitope-specific immunogen.

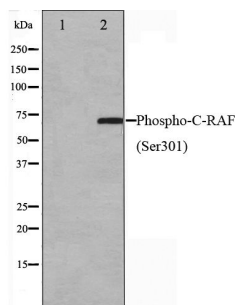
Specificity/Sensitivity: Phospho-C-RAF (Ser301) Antibody detects endogenous levels of C-RAF only when phosphorylated at Sersine301

Reactivity: Human, Mouse, Rat

Applications:

Predicted MW: 73kd

WB: 1:500~1:2000



Western blot analysis on Jurkat cell lysate using
Phospho-C-RAF(Ser301) Antibody

Background : Raf-1 is a MAP kinase kinase kinase (MAP3K) which functions downstream of the Ras family of membrane associated GTPases to which it binds directly. Once activated Raf-1 can phosphorylate to activate the dual specificity protein kinases MEK1 and MEK2 which in turn phosphorylate to activate the serine/threonine specific protein kinases ERK1 and ERK2. Activated ERKs are pleiotropic effectors of cell physiology and play an important role in the control of gene expression involved in the cell division cycle, apoptosis, cell differentiation and cell migration.