



Nibrin (Phospho-Ser278) Antibody

#14133

Catalog Number: 14133-1, 14133-2

Amount: 50µg/50µl, 100µg/100µl

Swiss-Prot No. : O60934

Form of Antibody: Rabbit IgG in phosphate buffered saline (without Mg²⁺ and Ca²⁺), pH 7.4, 150mM NaCl, 0.02% sodium azide and 50% glycerol.

Storage/Stability: Store at -20°C/1 year

Immunogen: The antiserum was produced against synthesized phosphopeptide derived from Human Nibrin around the phosphorylation site of Serine278

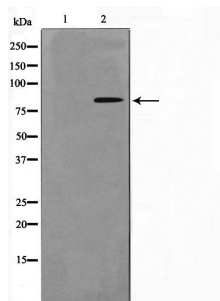
Purification: The antibody was affinity-purified from rabbit antiserum by affinity-chromatography using epitope-specific immunogen.

Specificity/Sensitivity: Phospho-Nibrin (Ser278) Antibody detects endogenous levels of Nibrin only when phosphorylated at Serine278

Reactivity: Human

Applications:

Predicted MW: 85kd WB:1:500~1:2000 IF/ICC:1:100-500



Western blot analysis on HuvEc cell lysate using
Phospho-Nibrin(Ser278) Antibody

Background :

NBS1 is a member of the MRE11/RAD50 double-strand break repair complex. Involved in DNA double-strand break repair and DNA damage-induced checkpoint activation. Mutation results in the Nijmegen breakage syndrome (NBS), an autosomal recessive chromosomal instability syndrome.