



## PTTG1 Antibody

#24337

**Catalog Number:** 24337-1, 24337-2

**Amount:** 50µg/50µl, 100µg/100µl

**Swiss-Prot No. :** O95997

**Form of Antibody:** Rabbit IgG in phosphate buffered saline (without Mg<sup>2+</sup> and Ca<sup>2+</sup>), pH 7.4, 150mM NaCl, 0.02% sodium azide and 50% glycerol.

**Storage/Stability:** Store at -20°C/1 year

**Immunogen:** The antiserum was produced against synthesized peptide derived from Human PTTG1

**Purification:** The antibody was affinity-purified from rabbit antiserum by affinity-chromatography using epitope-specific immunogen.

**Specificity/Sensitivity:** PTTG1 Antibody detects endogenous levels of total PTTG1

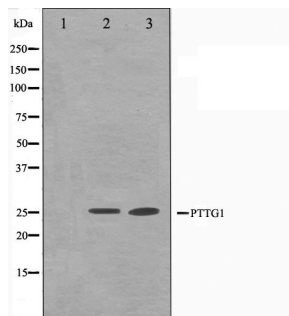
**Reactivity:** Human, Mouse, Rat

### Applications:

Predicted MW: 30kd

WB: 1:500-2000

IF/ICC: 1:100-500



Western blot analysis on Jurkat and K562 cell lysate using PTTG1 Antibody

**Background :** securin Regulatory protein, which plays a central role in chromosome stability, in the p53/TP53 pathway, and DNA repair. Probably acts by blocking the action of key proteins. During the mitosis, it blocks Separase/ESPL1 function, preventing the proteolysis of the cohesin complex and the subsequent segregation of the chromosomes. At the onset of anaphase, it is ubiquitinated, conducting to its destruction and to the liberation of ESPL1. Its function is however not limited to a blocking activity, since it is required to activate ESPL1. Negatively regulates the transcriptional activity and related apoptosis activity of TP53.