



GSTP1 Antibody

#24333

Catalog Number: 24333-1, 24333-2

Amount: 50µg/50µl, 100µg/100µl

Swiss-Prot No. : P09211

Form of Antibody: Rabbit IgG in phosphate buffered saline (without Mg²⁺ and Ca²⁺), pH 7.4, 150mM NaCl, 0.02% sodium azide and 50% glycerol.

Storage/Stability: Store at -20°C/1 year

Immunogen: The antiserum was produced against synthesized peptide derived from Human GSTP1

Purification: The antibody was affinity-purified from rabbit antiserum by affinity-chromatography using epitope-specific immunogen.

Specificity/Sensitivity: GSTP1 Antibody detects endogenous levels of total GSTP1

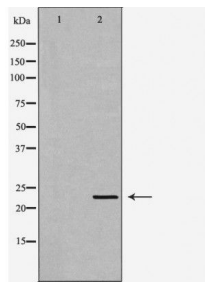
Reactivity: Human, Mouse, Rat

Applications:

Predicted MW: 23kd

WB: 1:500-2000

IHC: 1:50-200



Western blot analysis of extracts of various celllines, using GSTP1 antibody.

Background :

Glutathione S-transferases (GSTs) are a family of enzymes that play an important role in detoxification by catalyzing the conjugation of many hydrophobic and electrophilic compounds with reduced glutathione. Based on their biochemical, immunologic, and structural properties, the soluble GSTs are categorized into 4 main classes: alpha, mu, pi, and theta. This GST family member is a polymorphic gene encoding active, functionally different GSTP1 variant proteins that are thought to function in xenobiotic metabolism and play a role in susceptibility to cancer, and other diseases.