



GFRA1 Antibody

#24332

Catalog Number: 24332-1, 24332-2

Amount: 50µg/50µl, 100µg/100µl

Swiss-Prot No. : P56159

Form of Antibody: Rabbit IgG in phosphate buffered saline (without Mg²⁺ and Ca²⁺), pH 7.4, 150mM NaCl, 0.02% sodium azide and 50% glycerol.

Storage/Stability: Store at -20°C/1 year

Immunogen: The antiserum was produced against synthesized peptide derived from Human GFRA1

Purification: The antibody was affinity-purified from rabbit antiserum by affinity-chromatography using epitope-specific immunogen.

Specificity/Sensitivity: GFRA1 Antibody detects endogenous levels of total GFRA1

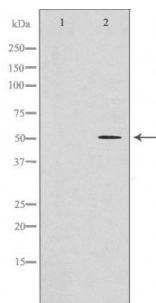
Reactivity: Human, Mouse, Rat

Applications:

Predicted MW: 51kd

WB: 1:500-2000

IHC: 1:50-200



Western blot analysis of GFRA1 antibody.

Background :

Glial cell line-derived neurotrophic factor (GDNF) and neurturin (NTN) are two structurally related, potent neurotrophic factors that play key roles in the control of neuron survival and differentiation. The protein encoded by this gene is a member of the GDNF receptor family. It is a glycosylphosphatidylinositol(GPI)-linked cell surface receptor for both GDNF and NTN, and mediates activation of the RET tyrosine kinase receptor. This gene is a candidate gene for Hirschsprung disease. Multiple alternatively spliced transcript variants have been described for this gene.