



CSF1R (Phospho-Tyr809) Antibody

#14174

Catalog Number: 14174-1, 14174-2

Amount: 50µg/50µl, 100µg/100µl

Swiss-Prot No. : P07333

Form of Antibody: Rabbit IgG in phosphate buffered saline (without Mg²⁺ and Ca²⁺), pH 7.4, 150mM NaCl, 0.02% sodium azide and 50% glycerol.

Storage/Stability: Store at -20°C/1 year

Immunogen: The antiserum was produced against synthesized phosphopeptide derived from Human CSF1R around the phosphorylation site of Tyrosine 809

Purification: The antibody was affinity-purified from rabbit antiserum by affinity-chromatography using epitope-specific immunogen.

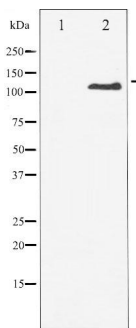
Specificity/Sensitivity: Phospho-CSF1R(Tyrosine 809)Antibody detects endogenous levels of CSF1R only when phosphorylated at Tyrosine 809

Reactivity: Human, Mouse, Rat

Applications:

Predicted MW: 108kd

WB: 1:500~1:2000



Western blot analysis of CSF1 R phosphorylation expression in LPS treated 293 whole cell lysates, The lane on the left is treated with the antigen-specific peptide.

Background :

This protein tyrosine kinase transmembrane receptor is the receptor for colony stimulating factor 1, a cytokine which controls the production, differentiation, and function of macrophages. This receptor mediates most if not all of the biological effects of this cytokine.