



HER2 (Phospho-Tyr877) Antibody

#14172

Catalog Number: 14172-1, 14172-2

Amount: 50µg/50µl, 100µg/100µl

Swiss-Prot No. : P04626

Form of Antibody: Rabbit IgG in phosphate buffered saline (without Mg²⁺ and Ca²⁺), pH 7.4, 150mM NaCl, 0.02% sodium azide and 50% glycerol.

Storage/Stability: Store at -20°C/1 year

Immunogen: The antiserum was produced against synthesized phosphopeptide derived from Human HER2 around the phosphorylation site of Tyrosine 877

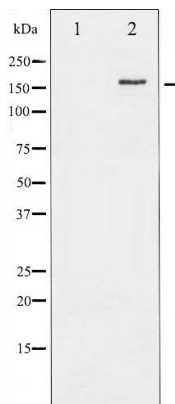
Purification: The antibody was affinity-purified from rabbit antiserum by affinity-chromatography using epitope-specific immunogen.

Specificity/Sensitivity: Phospho-HER2(Tyrosine 877)Antibody detects endogenous levels of HER2 only when phosphorylated at Tyrosine 877

Reactivity: Human, Mouse, Rat

Applications:

Predicted MW: 185kd WB:1:500~1:2000 IHC:1:50-200



Western blot analysis of HER2 phosphorylation expression in EGF treated MDA-MB-231 whole cell lysates, The lane on the left is treated with the antigen-specific peptide

Background :

This gene encodes a member of the epidermal growth factor (EGF) receptor family of receptor tyrosine kinases. This protein has no ligand binding domain of its own and therefore cannot bind growth factors.