



## HER2 (Phospho-Tyr1248) Antibody

#14171

**Catalog Number:** 14171-1, 14171-2

**Amount:** 50µg/50µl, 100µg/100µl

**Swiss-Prot No. :** P04626

**Form of Antibody:** Rabbit IgG in phosphate buffered saline (without Mg<sup>2+</sup> and Ca<sup>2+</sup>), pH 7.4, 150mM NaCl, 0.02% sodium azide and 50% glycerol.

**Storage/Stability:** Store at -20°C/1 year

**Immunogen:** The antiserum was produced against synthesized phosphopeptide derived from Human HER2 around the phosphorylation site of Tyrosine 1248

**Purification:** The antibody was affinity-purified from rabbit antiserum by affinity-chromatography using epitope-specific immunogen.

**Specificity/Sensitivity:** Phospho-HER2(Tyrosine 1248 )Antibody detects endogenous levels of HER2 only when phosphorylated at Tyrosine 1248

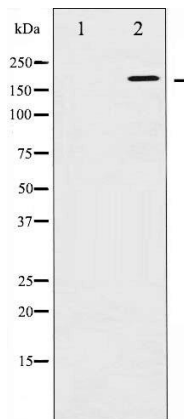
**Reactivity:** Human, Mouse, Rat

### Applications:

Predicted MW: 185kd

WB: 1:500~1:2000

IHC: 1:50-200



Western blot analysis of HER2 phosphorylation expression in EGF treated SK-OV3 whole cell lysates. The lane on the left is treated with the antigen-specific peptide.

### Background :

This gene encodes a member of the epidermal growth factor (EGF) receptor family of receptor tyrosine kinases. This protein has no ligand binding domain of its own and therefore cannot bind growth factors.