



C-RAF (Phospho-Ser338) Antibody

#14170

Catalog Number: 14170-1, 14170-2

Amount: 50µg/50µl, 100µg/100µl

Swiss-Prot No. : P04049

Form of Antibody: Rabbit IgG in phosphate buffered saline (without Mg²⁺ and Ca²⁺), pH 7.4, 150mM NaCl, 0.02% sodium azide and 50% glycerol.

Storage/Stability: Store at -20°C/1 year

Immunogen: The antiserum was produced against synthesized phosphopeptide derived from Human C-RAF around the phosphorylation site of Serine 338

Purification: The antibody was affinity-purified from rabbit antiserum by affinity-chromatography using epitope-specific immunogen.

Specificity/Sensitivity: Phospho-C-RAF(Serine 338) Antibody detects endogenous levels of C-RAF only when phosphorylated at Serine338

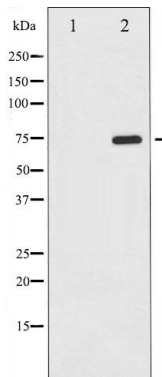
Reactivity: Human, Mouse, Rat

Applications:

Predicted MW: 74kd

WB: 1:500~1:2000

IHC: 1:50-200



Western blot analysis of C-RAF phosphorylation expression in PMA treated NIH-3T3 whole cell lysates, The lane on the left is treated with the antigen-specific peptide.

Background : Raf-1 is a MAP kinase kinase kinase (MAP3K) which functions downstream of the Ras family of membrane associated GTPases to which it binds directly. Once activated Raf-1 can phosphorylate to activate the dual specificity protein kinases MEK1 and MEK2 which in turn