



## C-RAF (Phospho-Ser296) Antibody

#14168

**Catalog Number:** 14168-1, 14168-2

**Amount:** 50µg/50µl, 100µg/100µl

**Swiss-Prot No. :** P04049

**Form of Antibody:** Rabbit IgG in phosphate buffered saline (without Mg<sup>2+</sup> and Ca<sup>2+</sup>), pH 7.4, 150mM NaCl, 0.02% sodium azide and 50% glycerol.

**Storage/Stability:** Store at -20°C/1 year

**Immunogen:** The antiserum was produced against synthesized phosphopeptide derived from Human C-RAF around the phosphorylation site of Serine 296

**Purification:** The antibody was affinity-purified from rabbit antiserum by affinity-chromatography using epitope-specific immunogen.

**Specificity/Sensitivity:** Phospho-C-RAF( Serine 296) Antibody detects endogenous levels of C-RAF only when phosphorylated at Serine 296

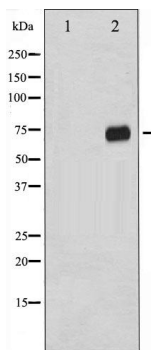
**Reactivity:** Human, Mouse, Rat

### Applications:

Predicted MW: 74kd

WB: 1:500~1:2000

IHC: 1:50-200



Western blot analysis of C-RAF phosphorylation expression in PMA treated 293 whole cell lysates, The lane on the left is treated with the antigen-specific peptide.

**Background :** Raf-1 is a MAP kinase kinase kinase (MAP3K) which functions downstream of the Ras family of membrane associated GTPases to which it binds directly. Once activated Raf-1 can phosphorylate to activate the dual specificity protein kinases MEK1 and MEK2 which in turn