



## EGFR (Phospho-Ser1026) Antibody

#14164

**Catalog Number:** 14164-1, 14164-2

**Amount:** 50µg/50µl, 100µg/100µl

**Swiss-Prot No. :** P00533

**Form of Antibody:** Rabbit IgG in phosphate buffered saline (without Mg<sup>2+</sup> and Ca<sup>2+</sup>), pH 7.4, 150mM NaCl, 0.02% sodium azide and 50% glycerol.

**Storage/Stability:** Store at -20°C/1 year

**Immunogen:** The antiserum was produced against synthesized phosphopeptide derived from Human EGFR around the phosphorylation site of Serine 1026

**Purification:** The antibody was affinity-purified from rabbit antiserum by affinity-chromatography using epitope-specific immunogen.

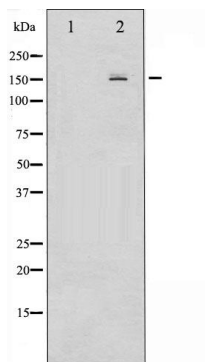
**Specificity/Sensitivity:** Phospho-EGFR( Serine 1026)Antibody detects endogenous levels of EGFR only when phosphorylated at Serine 1026

**Reactivity:** Human, Mouse, Rat

### Applications:

Predicted MW: 160kd

WB: 1:500~1:2000



Western blot analysis of EGFR phosphorylation expression in TSA treated HeLa whole cell lysates, The lane on the left is treated with the antigen-specific peptide.

### Background :

EGFR is a receptor tyrosine kinase. Receptor for epidermal growth factor (EGF) and related growth factors including TGF- $\alpha$ , amphiregulin, betacellulin, heparin-binding EGF-like growth factor, GP30 and vaccinia virus growth factor. Is involved in the control of cell growth and differentiation.