



ChK1 (Phospho-Ser301) Antibody

#14149

Catalog Number: 14149-1, 14149-2

Amount: 50µg/50µl, 100µg/100µl

Swiss-Prot No. : O14757

Form of Antibody: Rabbit IgG in phosphate buffered saline (without Mg²⁺ and Ca²⁺), pH 7.4, 150mM NaCl, 0.02% sodium azide and 50% glycerol.

Storage/Stability: Store at -20°C/1 year

Immunogen: The antiserum was produced against synthesized phosphopeptide derived from Human ChK1 around the phosphorylation site of Serine 301

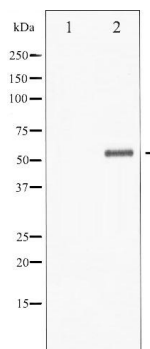
Purification: The antibody was affinity-purified from rabbit antiserum by affinity-chromatography using epitope-specific immunogen.

Specificity/Sensitivity: Phospho-ChK1 (Ser301) Antibody detects endogenous levels of ChK1 only when phosphorylated at Serine 301

Reactivity: Human, Mouse, Rat

Applications:

Predicted MW: 55kd WB: 1:500~1:2000 IHC: 1:50-200



Western blot analysis of Chk1 phosphorylation expression in 293 whole cell lysates. The lane on the left is treated with the antigen-specific peptide.

Background :

DNA damage induced protein phosphorylation; regulation of mitotic centrosome separation; regulation of S phase; peptidyl-threonine phosphorylation; DNA repair; chromatin-mediated maintenance of transcription; negative regulation of mitosis;