



CTSB Antibody

#24213

Catalog Number: 24213-1, 24213-2

Amount: 50µg/50µl, 100µg/100µl

Swiss-Prot No. : P07858

Form of Antibody: Rabbit IgG in phosphate buffered saline (without Mg²⁺ and Ca²⁺), pH 7.4, 150mM NaCl, 0.02% sodium azide and 50% glycerol.

Storage/Stability: Store at -20°C/1 year

Immunogen: The antiserum was produced against synthesized peptide derived from Human CTSB

Purification: The antibody was affinity-purified from rabbit antiserum by affinity-chromatography using epitope-specific immunogen.

Specificity/Sensitivity: CTSB Antibody detects endogenous levels of total CTSB

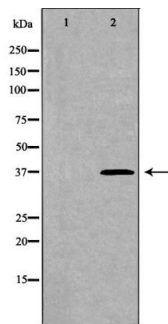
Reactivity: Human, Mouse, Rat

Applications:

Predicted MW: 38kd

WB: 1:500-2000

IHC: 1:50-200



Western blot analysis of brain cell lysate using CTSB antibody.

Background :

Cathepsin B (CSTB), part of the papain family of proteases, is a widely expressed lysosomal cysteine endopeptidase. Like other family members, cathepsin B is produced from a larger precursor form, pro-cathepsin B, which in its glycosylated form runs at approximately 40 kDa on SDS-PAGE, and is then activated by cleavage of a 62-amino acid pro-peptide. High levels of cathepsin B are found in macrophages and osteoclasts, as well as various types of cancer cells, including lung, colon, prostate, breast, and stomach. In addition, expression of cathepsin B has been associated with multiple sclerosis, rheumatoid arthritis, and pancreatitis. While generally localized to lysosomes, in cancer alterations can lead to its secretion. Its role in tumor progression is thought to involve promotion of basement membrane degradation, invasion and metastasis. Expression can correlate with poor prognosis for a variety of forms of cancer.