



CDCA8

Antibody

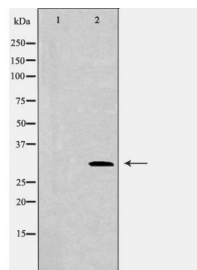
#24212

Catalog Number: 24212-1, 24212-2**Amount:** 50µg/50µl, 100µg/100µl**Swiss-Prot No. :** Q53HL2**Form of Antibody:** Rabbit IgG in phosphate buffered saline (without Mg²⁺ and Ca²⁺), pH 7.4, 150mM NaCl, 0.02% sodium azide and 50% glycerol.**Storage/Stability:** Store at -20°C/1 year**Immunogen:** The antiserum was produced against synthesized peptide derived from Human CDCA8**Purification:** The antibody was affinity-purified from rabbit antiserum by affinity-chromatography using epitope-specific immunogen.**Specificity/Sensitivity:** CDCA8 Antibody detects endogenous levels of total CDCA8**Reactivity:** Human, Mouse, Rat**Applications:**

Predicted MW: 31kd

WB: 1:500-2000

IHC: 1:50-200



Western blot analysis of HEX293 cell lysate using CDCA8 antibody.

Background :

Borealin is a 280-amino acid protein that stabilizes the bipolar mitotic spindle. Borealin is part of a complex called Aurora B kinase that has essential regulatory roles at centromeres and the central spindle in cells undergoing mitosis. This complex makes up the enzymatic core of the chromosomal passenger complex (CPC). It is possible that the Borealin subunit directs the CPC to centromeric DNA. Deletion of Borealin delays mitotic progression and causes kinetochore-spindle to mis-attach. Deletion also causes an increase in bipolar spindles associated with ectopic asters. These extra poles, which form after chromosomes acquire their bipolar orientation, seriously disrupt chromosome allotment during anaphase. It is true that inappropriate chromosomal segregation and cell division may cause aneuploidy leading to cancer, so an abnormal expression of Borealin may lead to gastric cancer.