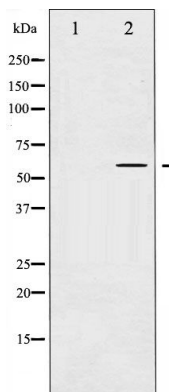




#24210

**Catalog Number:** 24210-1, 24210-2**Amount:** 50µg/50µl, 100µg/100µl**Swiss-Prot No. :** P41279**Form of Antibody:** Rabbit IgG in phosphate buffered saline (without Mg<sup>2+</sup> and Ca<sup>2+</sup>), pH 7.4, 150mM NaCl, 0.02% sodium azide and 50% glycerol.**Storage/Stability:** Store at -20°C/1 year**Immunogen:** The antiserum was produced against synthesized peptide derived from Human COT**Purification:** The antibody was affinity-purified from rabbit antiserum by affinity-chromatography using epitope-specific immunogen.**Specificity/Sensitivity:** COT Antibody detects endogenous levels of total COT**Reactivity:** Human, Mouse, Rat**Applications:**

Predicted MW: 60kd    WB:1:500-2000    IHC:1:50-200    IF/ICC:1:100-500



Western blot analysis of COT expression in LPS treated 293 whole cell lysates, The lane on the left is treated with the antigen-specific peptide.

**Background :**

This gene was identified by its oncogenic transforming activity in cells. The encoded protein is a member of the serine/threonine protein kinase family. This kinase can activate both the MAP kinase and JNK kinase pathways.