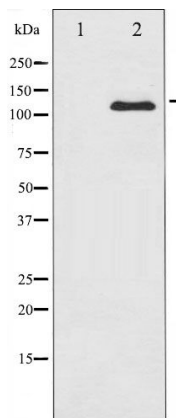




#24209

Catalog Number: 24209-1, 24209-2**Amount:** 50µg/50µl, 100µg/100µl**Swiss-Prot No. :** P10721**Form of Antibody:** Rabbit IgG in phosphate buffered saline (without Mg²⁺ and Ca²⁺), pH 7.4, 150mM NaCl, 0.02% sodium azide and 50% glycerol.**Storage/Stability:** Store at -20°C/1 year**Immunogen:** The antiserum was produced against synthesized peptide derived from Human c-Kit**Purification:** The antibody was affinity-purified from rabbit antiserum by affinity-chromatography using epitope-specific immunogen.**Specificity/Sensitivity:** c-Kit Antibody detects endogenous levels of total c-Kit**Reactivity:** Human, Mouse, Rat**Applications:**

Predicted MW: 120,145kd WB:1:500-2000



Western blot analysis of c-Kit expression in HeLa whole cell lysates, The lane on the left is treated with the antigen-specific peptide.

Background :

KIT encodes the human homolog of the proto-oncogene c-kit. C-kit was first identified as the cellular homolog of the feline sarcoma viral oncogene v-kit. KIT is a type 3 transmembrane receptor for MGF (mast cell growth factor, also known as stem cell factor). Mutations in KIT are associated with gastrointestinal stromal tumors, mast cell disease, acute myelogenous leukemia, and piebaldism.