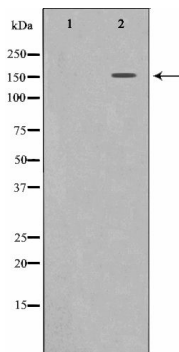




#24208

Catalog Number: 24208-1, 24208-2**Amount:** 50µg/50µl, 100µg/100µl**Swiss-Prot No. :** P08581**Form of Antibody:** Rabbit IgG in phosphate buffered saline (without Mg²⁺ and Ca²⁺), pH 7.4, 150mM NaCl, 0.02% sodium azide and 50% glycerol.**Storage/Stability:** Store at -20°C/1 year**Immunogen:** The antiserum was produced against synthesized peptide derived from Human c-Met**Purification:** The antibody was affinity-purified from rabbit antiserum by affinity-chromatography using epitope-specific immunogen.**Specificity/Sensitivity:** c-Met Antibody detects endogenous levels of total c-Met**Reactivity:** Human, Mouse, Rat**Applications:**

Predicted MW: 155kd WB:1:500-2000 IF/ICC:1:100-500



Western blot analysis of c-Met expression in HepG2 whole cell lysates, The lane on the left is treated with the antigen-specific peptide.

Background :

The proto-oncogene MET product is the hepatocyte growth factor receptor and encodes tyrosine-kinase activity. The primary single chain precursor protein is post-translationally cleaved to produce the alpha and beta subunits, which are disulfide linked to form the mature receptor.