



#24202

Catalog Number: 24202-1, 24202-2

Amount: 50µg/50µl, 100µg/100µl

Swiss-Prot No. :Q49MI3

Form of Antibody: Rabbit IgG in phosphate buffered saline (without Mg²⁺ and Ca²⁺), pH 7.4, 150mM NaCl, 0.02% sodium azide and 50% glycerol.

Storage/Stability: Store at -20°C/1 year

Immunogen: The antiserum was produced against synthesized peptide derived from Human CERKL

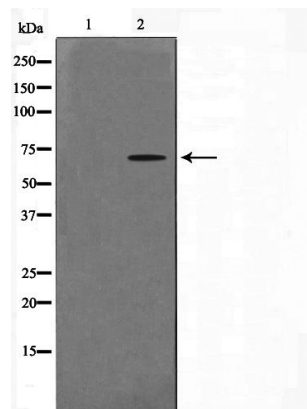
Purification: The antibody was affinity-purified from rabbit antiserum by affinity-chromatography using epitope-specific immunogen.

Specificity/Sensitivity: CERKL Antibody detects endogenous levels of total CERKL

Reactivity: Human

Applications:

Predicted MW: 63kd WB:1:500-2000



Western blot analysis on A549 cell lysate using CERKL Antibody

Background :

Ceramide kinases convert the sphingolipid metabolite ceramide into ceramide-1-phosphate, both key mediators of cellular apoptosis and survival. Ceramide metabolism plays an essential role in the viability of neuronal cells, the membranes of which are particularly rich in sphingolipids