



## Chk2 Antibody

#24207

**Catalog Number:** 24207-1, 24207-2

**Amount:** 50µg/50µl, 100µg/100µl

**Swiss-Prot No. :** O96017

**Form of Antibody:** Rabbit IgG in phosphate buffered saline (without Mg<sup>2+</sup> and Ca<sup>2+</sup>), pH 7.4, 150mM NaCl, 0.02% sodium azide and 50% glycerol.

**Storage/Stability:** Store at -20°C/1 year

**Immunogen:** The antiserum was produced against synthesized peptide derived from Human Chk2

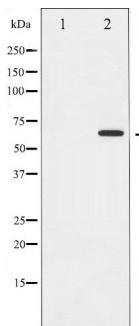
**Purification:** The antibody was affinity-purified from rabbit antiserum by affinity-chromatography using epitope-specific immunogen.

**Specificity/Sensitivity:** Chk2 Antibody detects endogenous levels of total Chk2

**Reactivity:** Human, Mouse, Rat

### Applications:

Predicted MW: 60kd    WB: 1:500-2000    IHC: 1:50-200



Western blot analysis of Chk2 expression in Jurkat whole cell lysates, The lane on the left is treated with the antigen-specific peptide.

### Background :

In response to DNA damage and replication blocks, cell cycle progression is halted through the control of critical cell cycle regulators. The protein encoded by this gene is a cell cycle checkpoint regulator and putative tumor suppressor.