



#24206

**Catalog Number:** 24206-1, 24206-2

**Amount:** 50µg/50µl, 100µg/100µl

**Swiss-Prot No. :** O14757

**Form of Antibody:** Rabbit IgG in phosphate buffered saline (without Mg<sup>2+</sup> and Ca<sup>2+</sup>), pH 7.4, 150mM NaCl, 0.02% sodium azide and 50% glycerol.

**Storage/Stability:** Store at -20°C/1 year

**Immunogen:** The antiserum was produced against synthesized peptide derived from Human Chk1

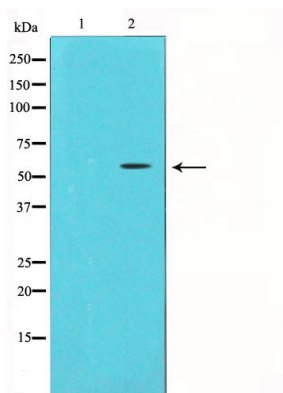
**Purification:** The antibody was affinity-purified from rabbit antiserum by affinity-chromatography using epitope-specific immunogen.

**Specificity/Sensitivity:** Chk1 Antibody detects endogenous levels of total Chk1

**Reactivity:** Human

**Applications:**

Predicted MW: 56kd    WB:1:500-2000



Western blot analysis of Chk1 expression in HeLa whole cell lysates, The lane on the left is treated with the antigen-specific peptide.

### Background :

DNA damage induced protein phosphorylation; regulation of mitotic centrosome separation; regulation of S phase; peptidyl-threonine phosphorylation; DNA repair; chromatin-mediated maintenance of transcription; negative regulation of mitosis;