



## CBP Antibody

#24205

**Catalog Number:** 24205-1, 24205-2

**Amount:** 50µg/50µl, 100µg/100µl

**Swiss-Prot No. :** Q92763

**Form of Antibody:** Rabbit IgG in phosphate buffered saline (without Mg<sup>2+</sup> and Ca<sup>2+</sup>), pH 7.4, 150mM NaCl, 0.02% sodium azide and 50% glycerol.

**Storage/Stability:** Store at -20°C/1 year

**Immunogen:** The antiserum was produced against synthesized peptide derived from Human CBP

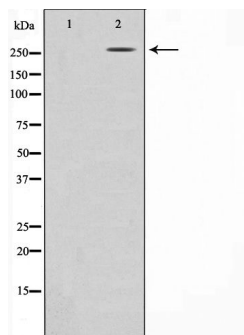
**Purification:** The antibody was affinity-purified from rabbit antiserum by affinity-chromatography using epitope-specific immunogen.

**Specificity/Sensitivity:** CBP Antibody detects endogenous levels of total CBP

**Reactivity:** Human, Mouse, Rat

### Applications:

Predicted MW: 265kd    WB:1:500-2000    IHC:1:50-200    IF/ICC:1:100-500



Western blot analysis on HeLa cell lysate using CBP Antibody

**Background :** CBP a protein acetyltransferase that can transcriptionally activate histones. Acetylates the NCOA3 coactivator. Binds specifically to phosphorylated CREB1 and enhances its transcriptional activity toward cAMP-responsive genes. Methylation of the KIX domain by CARM1 blocks association with CREB, blocking CREB signaling, and activating the apoptotic response. Found in a complex containing NCOA2, NCOA3, IKKA, IKKB, and IKBKG. Probably part of a complex with HIF1A and EP300. Interacts with the C-terminal region of CITED4. The TAZ-type 1 domain interacts with HIF1A. Interacts with MAF, SRCAP, CARM1, ELF3, MLLT7/FOXO4, N4BP2, NCOA1, NCOA3, NCOA6, PCAF, PELP1, PML, SMAD1, SMAD2, SMAD3, SPIB and TRERF1. Interacts with HTLV-1 Tax, p30II, and HIV-1 Tat. Interacts with KLF1;