



## CD147 Antibody

#24204

**Catalog Number:** 24204-1, 24204-2

**Amount:** 50µg/50µl, 100µg/100µl

**Swiss-Prot No. :** P35613

**Form of Antibody:** Rabbit IgG in phosphate buffered saline (without Mg<sup>2+</sup> and Ca<sup>2+</sup>), pH 7.4, 150mM NaCl, 0.02% sodium azide and 50% glycerol.

**Storage/Stability:** Store at -20°C/1 year

**Immunogen:** The antiserum was produced against synthesized peptide derived from Human CD147

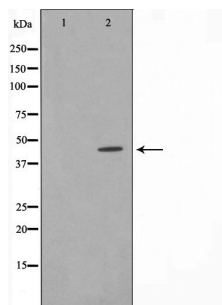
**Purification:** The antibody was affinity-purified from rabbit antiserum by affinity-chromatography using epitope-specific immunogen.

**Specificity/Sensitivity:** CD147 Antibody detects endogenous levels of total CD147

**Reactivity:** Human, Mouse, Rat

### Applications:

Predicted MW: 48,36kd    WB:1:500-2000    IHC:1:50-200



Western blot analysis on HuvEc cell lysate using CD147 Antibody

### Background :

BSG Plays pivotal roles in spermatogenesis, embryo implantation, neural network formation and tumor progression. Stimulates adjacent fibroblasts to produce matrix metalloproteinases (MMPS). May target monocarboxylate transporters SLC16A1, SLC16A3 and SLC16A8 to plasma membranes of retinal pigment epithelium and neural retina. Seems to be a receptor for oligomannosidic glycans. In vitro, promotes outgrowth of astrocytic processes. Enriched on the surface of tumor cells. Up-regulated in gliomas. Its expression levels correlate with malignant potential of the tumor.