



#24203

Catalog Number: 24203-1, 24203-2

Amount: 50µg/50µl, 100µg/100µl

Swiss-Prot No. : Q9H5V8

Form of Antibody: Rabbit IgG in phosphate buffered saline (without Mg²⁺ and Ca²⁺), pH 7.4, 150mM NaCl, 0.02% sodium azide and 50% glycerol.

Storage/Stability: Store at -20°C/1 year

Immunogen: The antiserum was produced against synthesized peptide derived from Human CDCP1

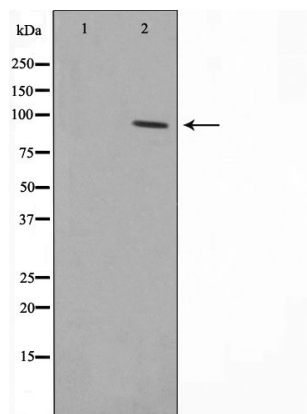
Purification: The antibody was affinity-purified from rabbit antiserum by affinity-chromatography using epitope-specific immunogen.

Specificity/Sensitivity: CDCP1 Antibody detects endogenous levels of total CDCP1

Reactivity: Human, Mouse

Applications:

Predicted MW: 90kd WB: 1:500-2000 IF/ICC: 1:100-500



Western blot analysis on COLO205 cell lysate using CDCP1 Antibody

Background :

CDCP1 a transmembrane protein containing three extracellular CUB domains. Overexpressed in some colon and lung cancers. Its expression level is correlated with the metastatic ability of carcinoma cells. It has been shown to be tyrosine phosphorylated in a cancer cell line. Alternatively spliced transcript variants encoding distinct isoforms have been reported.