



CtBP1 Antibody

#24201

Catalog Number: 24201-1, 24201-2

Amount: 50µg/50µl, 100µg/100µl

Swiss-Prot No. :Q13363

Form of Antibody: Rabbit IgG in phosphate buffered saline (without Mg²⁺ and Ca²⁺), pH 7.4, 150mM NaCl, 0.02% sodium azide and 50% glycerol.

Storage/Stability: Store at -20°C/1 year

Immunogen: The antiserum was produced against synthesized peptide derived from Human CtBP1

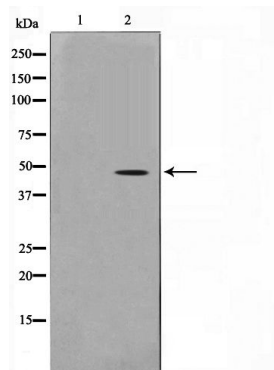
Purification: The antibody was affinity-purified from rabbit antiserum by affinity-chromatography using epitope-specific immunogen.

Specificity/Sensitivity: CtBP1 Antibody detects endogenous levels of total CtBP1

Reactivity: Human, Mouse, Rat

Applications:

Predicted MW: 48kd WB: 1:500-2000 IHC: 1:50-200



Western blot analysis on Jurkat cell lysate using CtBP1
Antibody

Background :

This gene encodes a protein that binds to the C-terminus of adenovirus E1A proteins. This phosphoprotein is a transcriptional repressor and may play a role during cellular proliferation. This protein and the product of a second closely related gene, CTBP2, can dimerize. Both proteins can also interact with a polycomb group protein complex which participates in regulation of gene expression during development. Alternative splicing of transcripts from this gene results in multiple transcript variants.