



#24320

Catalog Number: 24320-1, 24320-2

Amount: 50µg/50µl, 100µg/100µl

Swiss-Prot No. : Q8TF65

Form of Antibody: Rabbit IgG in phosphate buffered saline (without Mg²⁺ and Ca²⁺), pH 7.4, 150mM NaCl, 0.02% sodium azide and 50% glycerol.

Storage/Stability: Store at -20°C/1 year

Immunogen: The antiserum was produced against synthesized peptide derived from Human GIPC2

Purification: The antibody was affinity-purified from rabbit antiserum by affinity-chromatography using epitope-specific immunogen.

Specificity/Sensitivity: GIPC2 Antibody detects endogenous levels of total GIPC2

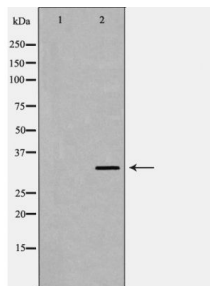
Reactivity: Human, Mouse, Rat

Applications:

Predicted MW: 34kd

WB: 1:500-2000

IHC: 1:50-200



Western blot analysis of extracts of various cell lines, using GIPC2 antibody.

Background :

The eukaryotic PDZ domain is a multifunctional protein-protein interacting motif that is found in a variety of proteins and is involved in both the clustering of signaling molecules and the organization of protein networks. GIPC2 (GIPC PDZ domain containing family, member 2), also known as SEMCAP2, is a 315 amino acid protein that localizes to the cytoplasm and contains one PDZ domain. Expressed at high levels in kidney and colon and at lower levels in adult liver, GIPC2 interacts with SEMA5A and is thought to function as a scaffold protein, possibly modulating cell adhesion and growth factor signaling and playing a role in tumorigenesis. The gene encoding GIPC2 maps to human chromosome 1, which spans 260 million base pairs, contains over 3,000 genes and comprises nearly 8% of the human genome.