



GFAP Antibody

#24313

Catalog Number: 24313-1, 24313-2

Amount: 50µg/50µl, 100µg/100µl

Swiss-Prot No. : P14136

Form of Antibody: Rabbit IgG in phosphate buffered saline (without Mg²⁺ and Ca²⁺), pH 7.4, 150mM NaCl, 0.02% sodium azide and 50% glycerol.

Storage/Stability: Store at -20°C/1 year

Immunogen: The antiserum was produced against synthesized peptide derived from Human GFAP

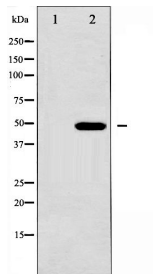
Purification: The antibody was affinity-purified from rabbit antiserum by affinity-chromatography using epitope-specific immunogen.

Specificity/Sensitivity: GFAP Antibody detects endogenous levels of total GFAP

Reactivity: Human, Mouse, Rat

Applications:

Predicted MW: 50kd WB: 1:500-2000 IHC: 1:50-200 IF/ICC: 1:100-500



Western blot analysis of GFAP expression in COLO205 whole cell lysates, The lane on the left is treated with the antigen-specific peptide.

Background :

This gene encodes one of the major intermediate filament proteins of mature astrocytes. It is used as a marker to distinguish astrocytes from other glial cells during development. Mutations in this gene cause Alexander disease, a rare disorder of astrocytes in the central nervous system. An additional transcript variant has been described, but its full length sequence has not been determined.