



## GABRG1 Antibody

#24312

**Catalog Number:** 24312-1, 24312-2

**Amount:** 50µg/50µl, 100µg/100µl

**Swiss-Prot No. :** Q8N1C3

**Form of Antibody:** Rabbit IgG in phosphate buffered saline (without Mg<sup>2+</sup> and Ca<sup>2+</sup>), pH 7.4, 150mM NaCl, 0.02% sodium azide and 50% glycerol.

**Storage/Stability:** Store at -20°C/1 year

**Immunogen:** The antiserum was produced against synthesized peptide derived from Human GABRG1

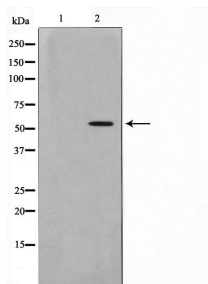
**Purification:** The antibody was affinity-purified from rabbit antiserum by affinity-chromatography using epitope-specific immunogen.

**Specificity/Sensitivity:** GABRG1 Antibody detects endogenous levels of total GABRG1

**Reactivity:** Human, Mouse, Rat

**Applications:**

Predicted MW: 54kd      WB: 1:500-2000



Western blot analysis on LOVO cell lysate using GABRG1 Antibody

**Background :**

The protein encoded by this gene belongs to the ligand-gated ionic channel family. It is an integral membrane protein and plays an important role in inhibiting neurotransmission by binding to the benzodiazepine receptor and opening an integral chloride channel. This gene is clustered with three other family members on chromosome 4.