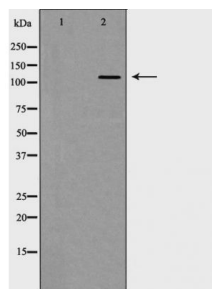




#24315

Catalog Number: 24315-1, 24315-2**Amount:** 50µg/50µl, 100µg/100µl**Swiss-Prot No. :** P41594**Form of Antibody:** Rabbit IgG in phosphate buffered saline (without Mg²⁺ and Ca²⁺), pH 7.4, 150mM NaCl, 0.02% sodium azide and 50% glycerol.**Storage/Stability:** Store at -20°C/1 year**Immunogen:** The antiserum was produced against synthesized peptide derived from Human GRM5**Purification:** The antibody was affinity-purified from rabbit antiserum by affinity-chromatography using epitope-specific immunogen.**Specificity/Sensitivity:** GRM5 Antibody detects endogenous levels of total GRM5**Reactivity:** Human, Mouse, Rat**Applications:**

Predicted MW: 130kd WB: 1:500-2000 IF/ICC: 1:100-500



Western blot analysis of GRM5 expression in HT-29 cells

Background :

Glutamate receptors constitute the principal excitatory neurotransmitter receptors in brain. Two classes of glutamate receptors exist: Ionotropic receptors, and metabotropic receptors (mGluRs). Ionotropic glutamate receptors are oligomeric complexes of various subunits (GluR1 7, NMDA1 3, KAI 2) which comprise ligand gated calcium channels.