



## GRIN1 Antibody

#24311

**Catalog Number:** 24311-1, 24311-2

**Amount:** 50µg/50µl, 100µg/100µl

**Swiss-Prot No. :** Q7Z2K8

**Form of Antibody:** Rabbit IgG in phosphate buffered saline (without Mg<sup>2+</sup> and Ca<sup>2+</sup>), pH 7.4, 150mM NaCl, 0.02% sodium azide and 50% glycerol.

**Storage/Stability:** Store at -20°C/1 year

**Immunogen:** The antiserum was produced against synthesized peptide derived from Human GRIN1

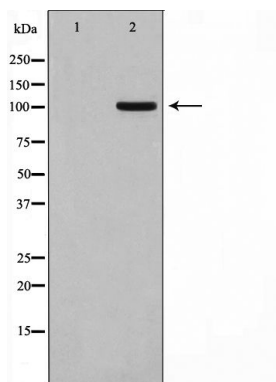
**Purification:** The antibody was affinity-purified from rabbit antiserum by affinity-chromatography using epitope-specific immunogen.

**Specificity/Sensitivity:** GRIN1 Antibody detects endogenous levels of total GRIN1

**Reactivity:** Human

**Applications:**

Predicted MW:102kd    WB:1:500-2000



Western blot analysis on HT29 cell lysate using GPRIN1 Antibody

**Background :**

GRIN1 May be involved in neurite outgrowth. Interacts with activated forms of GNAI1, GNAO1 and GNAZ. 2 isoforms of the human protein are produced by alternative splicing. Note: This description may include information from UniProtKB.