



GALK1 Antibody

#24309

Catalog Number: 24309-1, 24309-2

Amount: 50µg/50µl, 100µg/100µl

Swiss-Prot No. : P51570

Form of Antibody: Rabbit IgG in phosphate buffered saline (without Mg²⁺ and Ca²⁺), pH 7.4, 150mM NaCl, 0.02% sodium azide and 50% glycerol.

Storage/Stability: Store at -20°C/1 year

Immunogen: The antiserum was produced against synthesized peptide derived from Human GALK1

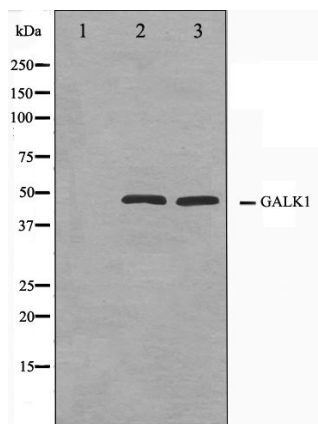
Purification: The antibody was affinity-purified from rabbit antiserum by affinity-chromatography using epitope-specific immunogen.

Specificity/Sensitivity: GALK1 Antibody detects endogenous levels of total GALK1

Reactivity: Human, Mouse, Rat

Applications:

Predicted MW: 45kd WB: 1:500-2000



Western blot analysis on NIH-3T3 and HeLa cell lysate using GALK1 Antibody

Background :

GALK1 Major enzyme for galactose metabolism. Belongs to the GHMP kinase family. GalK subfamily.