



#24307

Catalog Number: 24307-1, 24307-2

Amount: 50µg/50µl, 100µg/100µl

Swiss-Prot No. : P11169

Form of Antibody: Rabbit IgG in phosphate buffered saline (without Mg²⁺ and Ca²⁺), pH 7.4, 150mM NaCl, 0.02% sodium azide and 50% glycerol.

Storage/Stability: Store at -20°C/1 year

Immunogen: The antiserum was produced against synthesized peptide derived from Human GLUT3

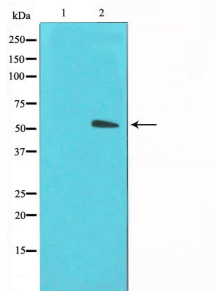
Purification: The antibody was affinity-purified from rabbit antiserum by affinity-chromatography using epitope-specific immunogen.

Specificity/Sensitivity: GLUT3 Antibody detects endogenous levels of total GLUT3

Reactivity: Human

Applications:

Predicted MW: 54kd WB: 1:500-2000 IHC: 1:50-200



Western blot analysis on LOVO cell lysate using GLUT3 Antibody

Background :

GLUT3 is an integral membrane facilitative glucose transporter. One of 13 members of the human equilibrative glucose transport protein family. Its surface expression is induced by insulin. It is restricted in humans to brain, testis (in the spermatozoa), and skeletal muscle, mostly in triads of slow-twitch fibres. Detected only in the brain of mouse and rat.