



#24301

Catalog Number: 24301-1, 24301-2

Amount: 50µg/50µl, 100µg/100µl

Swiss-Prot No. : P39748

Form of Antibody: Rabbit IgG in phosphate buffered saline (without Mg²⁺ and Ca²⁺), pH 7.4, 150mM NaCl, 0.02% sodium azide and 50% glycerol.

Storage/Stability: Store at -20°C/1 year

Immunogen: The antiserum was produced against synthesized peptide derived from Human FEN1

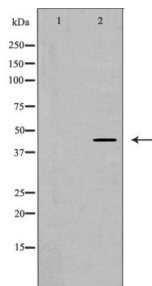
Purification: The antibody was affinity-purified from rabbit antiserum by affinity-chromatography using epitope-specific immunogen.

Specificity/Sensitivity: FEN1 Antibody detects endogenous levels of total FEN1

Reactivity: Human, Mouse, Rat

Applications:

Predicted MW: 43kd WB: 1:500-2000 IHC: 1:50-200



Western blot analysis of extracts of various cell lines, using FEN1 antibody.

Background : Flap endonuclease-1 (FEN-1) is a structure-specific nuclease with multiple functions in DNA processing pathways. The replication and DNA repair activities of FEN-1 are critical for genomic stability in the eukaryotic cell. Through interaction with proliferation cell nuclear antigen (PCNA), FEN-1 helps coordinate Okazaki fragment maturation by removing RNA-DNA primers. FEN-1 is also required for non-homologous end joining of double stranded DNA breaks in long patch base excision repair. The multi-functional activities of FEN-1 are regulated by various mechanisms, including protein partner interactions, post-translational modifications (8,9), and subcellular re-localization in response to cell cycle or DNA damage .