



ENG

Antibody

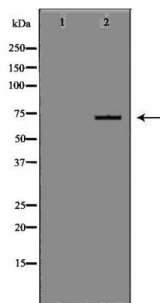
#24290

Catalog Number: 24290-1, 24290-2**Amount:** 50µg/50µl, 100µg/100µl**Swiss-Prot No. :** P17813**Form of Antibody:** Rabbit IgG in phosphate buffered saline (without Mg²⁺ and Ca²⁺), pH 7.4, 150mM NaCl, 0.02% sodium azide and 50% glycerol.**Storage/Stability:** Store at -20°C/1 year**Immunogen:** The antiserum was produced against synthesized peptide derived from Human ENG**Purification:** The antibody was affinity-purified from rabbit antiserum by affinity-chromatography using epitope-specific immunogen.**Specificity/Sensitivity:** ENG Antibody detects endogenous levels of total ENG**Reactivity:** Human**Applications:**

Predicted MW:70kd

WB:1:500-2000

IHC:1:50-200



Western blot analysis of extracts of various celllines, using ENG antibody.

Background :

This gene encodes a homodimeric transmembrane protein which is a major glycoprotein of the vascular endothelium. This protein is a component of the transforming growth factor beta receptor complex and it binds to the beta1 and beta3 peptides with high affinity. Mutations in this gene cause hereditary hemorrhagic telangiectasia, also known as Osler-Rendu-Weber syndrome 1, an autosomal dominant multisystemic vascular dysplasia. This gene may also be involved in preeclampsia and several types of cancer. Alternatively spliced transcript variants encoding different isoforms have been found for this gene.