



EEF2K

Antibody

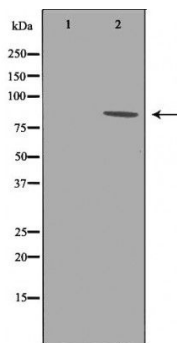
#24289

Catalog Number: 24289-1, 24289-2**Amount:** 50µg/50µl, 100µg/100µl**Swiss-Prot No. :** O00418**Form of Antibody:** Rabbit IgG in phosphate buffered saline (without Mg²⁺ and Ca²⁺), pH 7.4, 150mM NaCl, 0.02% sodium azide and 50% glycerol.**Storage/Stability:** Store at -20°C/1 year**Immunogen:** The antiserum was produced against synthesized peptide derived from Human EEF2K**Purification:** The antibody was affinity-purified from rabbit antiserum by affinity-chromatography using epitope-specific immunogen.**Specificity/Sensitivity:** EEF2K Antibody detects endogenous levels of total EEF2K**Reactivity:** Human, Mouse, Rat**Applications:**

Predicted MW: 82kd

WB: 1:500-2000

IHC: 1:50-200



Western blot analysis of extracts of various celllines, using EEF2K antibody.

Background :

This gene encodes a highly conserved protein kinase in the calmodulin-mediated signaling pathway that links activation of cell surface receptors to cell division. This kinase is involved in the regulation of protein synthesis. It phosphorylates eukaryotic elongation factor 2 (EEF2) and thus inhibits the EEF2 function. The activity of this kinase is increased in many cancers and may be a valid target for anti-cancer treatment.