



#24281

**Catalog Number:** 24281-1, 24281-2

**Amount:** 50µg/50µl, 100µg/100µl

**Swiss-Prot No. :** P14921

**Form of Antibody:** Rabbit IgG in phosphate buffered saline (without Mg<sup>2+</sup> and Ca<sup>2+</sup>), pH 7.4, 150mM NaCl, 0.02% sodium azide and 50% glycerol.

**Storage/Stability:** Store at -20°C/1 year

**Immunogen:** The antiserum was produced against synthesized peptide derived from Human ETS1

**Purification:** The antibody was affinity-purified from rabbit antiserum by affinity-chromatography using epitope-specific immunogen.

**Specificity/Sensitivity:** ETS1 Antibody detects endogenous levels of total ETS1

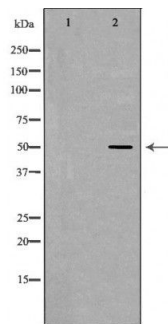
**Reactivity:** Human, Mouse, Rat

**Applications:**

Predicted MW: 50kd

WB: 1:500-2000

IHC: 1:50-200



Western blot analysis of extracts of various celllines, using ETS1 antibody.

**Background :**

This gene encodes a member of the ETS family of transcription factors, which are defined by the presence of a conserved ETS DNA-binding domain that recognizes the core consensus DNA sequence GGAA/T in target genes. These proteins function either as transcriptional activators or repressors of numerous genes, and are involved in stem cell development, cell senescence and death, and tumorigenesis. Alternatively spliced transcript variants encoding different isoforms have been described for this gene.