



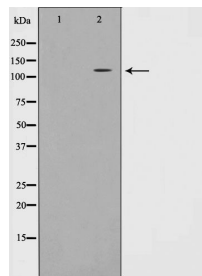
EPHA7

Antibody

#24271

Catalog Number: 24271-1, 24271-2**Amount:** 50µg/50µl, 100µg/100µl**Swiss-Prot No. :**Q15375**Form of Antibody:** Rabbit IgG in phosphate buffered saline (without Mg²⁺ and Ca²⁺), pH 7.4, 150mM NaCl, 0.02% sodium azide and 50% glycerol.**Storage/Stability:** Store at -20°C/1 year**Immunogen:** The antiserum was produced against synthesized peptide derived from Human EPHA7**Purification:** The antibody was affinity-purified from rabbit antiserum by affinity-chromatography using epitope-specific immunogen.**Specificity/Sensitivity:** EPHA7 Antibody detects endogenous levels of total EPHA7**Reactivity:** Human, Mouse, Rat**Applications:**

Predicted MW: 112kd WB: 1:500-2000



Western blot analysis on JK cell lysate using EPHA7 Antibody

Background :

This gene belongs to the ephrin receptor subfamily of the protein-tyrosine kinase family. EPH and EPH-related receptors have been implicated in mediating developmental events, particularly in the nervous system. Receptors in the EPH subfamily typically have a single kinase domain and an extracellular region containing a Cys-rich domain and 2 fibronectin type III repeats. The ephrin receptors are divided into 2 groups based on the similarity of their extracellular domain sequences and their affinities for binding ephrin-A and ephrin-B ligands.