



E2F8

Antibody

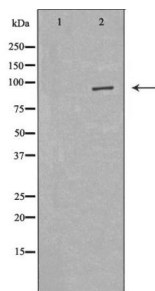
#24278

Catalog Number: 24278-1, 24278-2**Amount:** 50µg/50µl, 100µg/100µl**Swiss-Prot No. :**A0AVK6**Form of Antibody:** Rabbit IgG in phosphate buffered saline (without Mg²⁺ and Ca²⁺), pH 7.4, 150mM NaCl, 0.02% sodium azide and 50% glycerol.**Storage/Stability:** Store at -20°C/1 year**Immunogen:** The antiserum was produced against synthesized peptide derived from Human E2F8**Purification:** The antibody was affinity-purified from rabbit antiserum by affinity-chromatography using epitope-specific immunogen.**Specificity/Sensitivity:** E2F8 Antibody detects endogenous levels of total E2F8**Reactivity:** Human, Mouse, Rat**Applications:**

Predicted MW: 94kd

WB: 1:500-2000

IHC: 1:50-200



Western blot analysis of Hela cell lysate using E2F8 antibody.

Background :

This gene encodes a member of a family of transcription factors which regulate the expression of genes required for progression through the cell cycle. The encoded protein regulates progression from G1 to S phase by ensuring the nucleus divides at the proper time. Multiple alternatively spliced variants, encoding the same protein, have been identified.