



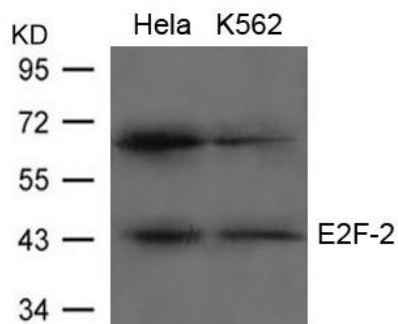
E2F2

Antibody

#24275

Catalog Number: 24275-1, 24275-2**Amount:** 50µg/50µl, 100µg/100µl**Swiss-Prot No. :**Q14209**Form of Antibody:** Rabbit IgG in phosphate buffered saline (without Mg²⁺ and Ca²⁺), pH 7.4, 150mM NaCl, 0.02% sodium azide and 50% glycerol.**Storage/Stability:** Store at -20°C/1 year**Immunogen:** The antiserum was produced against synthesized peptide derived from Human E2F2**Purification:** The antibody was affinity-purified from rabbit antiserum by affinity-chromatography using epitope-specific immunogen.**Specificity/Sensitivity:** E2F2 Antibody detects endogenous levels of total E2F2**Reactivity:** Human, Mouse**Applications:**

Predicted MW: 45kd WB: 1:500-2000



Western blot analysis of extracts from HeLa and K562 cells using E2F-2 Antibody

Background :

Transcription activator that binds DNA cooperatively with DP proteins through the E2 recognition site, 5'-TTTC[CG]CGC-3' found in the promoter region of a number of genes whose products are involved in cell cycle regulation or in DNA replication. The DRTF1/E2F complex functions in the control of cell-cycle progression from G₁ to S phase. E2F-2 binds specifically to RB1 protein, in a cell-cycle dependent manner.